



UNIVERSITY of MARYLAND
MARYLAND
FIRE and RESCUE
INSTITUTE

REPORT TO:

**Emergency Medical Services Board and
SEMSAC Joint Session**

January 15, 2025

Michael E. Cox, Jr. MS, CFO, EFO, NRP

Executive Director

MFRI Student Enrollment History



MFRI 2024 Statistical Report

Total Student Hours:	743,142
Total Instructional Hours:	50,157
Total Courses Offered:	2,372
Certifications Awarded (Fire and EMS):	6,441



MFRI 2024 Statistical Report

Students By Discipline 23,968

➤ Advanced Life Support (ALS)	818
➤ Company Drills	675
➤ EMS	5,160
➤ Fire	5,661
➤ Hazardous Materials	1,627
➤ Industrial	2,210
➤ Management	3,098
➤ Prof. Development for Instructors	831
➤ Rescue	1,258
➤ Seminars	796
➤ Simulation Center	1,834



MFRI 2024 Statistical Report

Course Offerings By Program:

Company Drills	52
Emergency Medial Services	309
Fire	363
Hazardous Materials	117
Industrial	91
Management	253
Professional Development for Instructors	40
Rescue	74
Seminars	23
Simulation Center	47
Train the Trainer	1



MFRI 2024 Statistical Report

NREMT Pass Rates:

1st Attempt: 65%

2nd Attempt: 71%

3rd Attempt: 73%



New Courses Developed:

- Fire Inspector
- First Responder Inspector
- Heavy Vehicle Extrication
- Lithium-Ion Battery Short Course
- Plans Examiner

Revised Courses:

- Engine Company Operations
- Hazardous Materials Illicit Labs
- Hazardous Materials Victim Rescue & Recovery
- Public Fire and Life Safety Educator I
- Public Fire and Life Safety Educator II
- Rope Rescue Operations
- Rope Rescue Technician
- Swiftwater Awareness/Ops/Tech
- Site Operations



Courses Currently in Revision

- Firefighter I
- Firefighter II
- Emergency Vehicle Operator
- Pumps Operator
- Aerial Operator
- Mobile Water Supply
- FD Health and Safety Officer
- FD Incident Safety Officer
- Surface Water Rescue Awareness
- Surface Water Rescue Ops/Tech
- Structural Collapse Awareness/Ops/Tech
- Marine Firefighter
- EMT Refresher**
- Instructor III



Articulation Agreements



ALLEGANY COLLEGE
of MARYLAND



ANNE ARUNDEL
COMMUNITY COLLEGE



PRINCE GEORGE'S
COMMUNITY COLLEGE



CECIL COLLEGE



UNIVERSITY
OF MARYLAND
GLOBAL CAMPUS

Simulation Enhancements

MFRI continues to utilize simulation training to enhance students' skills in managing all-hazards incidents.

Simulation training is offered for all EMS, Fire, and Rescue Incidents adding a significant degree of realism.

Simulation training is also used for:

- Hazardous Materials
- Active Assailant
- Mass Casualty

We are currently working to further enhance our immersive training offerings.

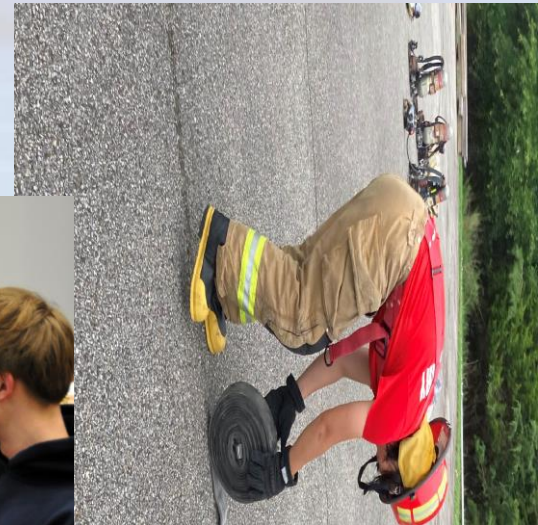


High School Cadet Programs

Working in conjunction with county representatives and local fire departments, the high school cadet program provides potential firefighters and EMT's with the necessary required training.

Programs are active in the following counties:

- Calvert County
- Charles County
- Harford County
- Montgomery County
- Prince George's County
- Talbot County
- Queen Anne's County (Kent, Talbot, and Caroline)
- St. Mary's County
- Washington County
- Wicomico County



Federal/State Grant Funding

During Fiscal Year 2024, MFRI was awarded grants totaling more than \$1.6 million dollars.

Assistance to Firefighters Grants (AFG): Provides equipment and props replacing outdated and obsolete personal protection equipment, training props, training aids, thermal devices, air compressors, and simulators.

National Fire Academy/Fire Training Systems Grant Program (NFA/FTS): Grant dollars provide National Fire Academy programs in locales across the state, greatly increasing the number of trained Maryland responders and lifting the travel burden to the National Fire Academy in Emmitsburg, Maryland.

Hazardous Materials Emergency Preparedness Grant (HMEP): Awarded by Maryland Department of Emergency Management (MDEM), this grant enables MFRI to provide a thorough hazardous materials course curriculum throughout the state, training first responders to safely mitigate emergency incidents and protect Maryland citizens.

Incident Management Training and Support (IMT): Awarded by Maryland Department of Emergency Management (MDEM), this grant was developed to manage escalating emergency incidents and complex pre-planned events within the state that require significant resources and include hazard mitigation, incident response, and disaster recovery.

QUESTIONS?

