



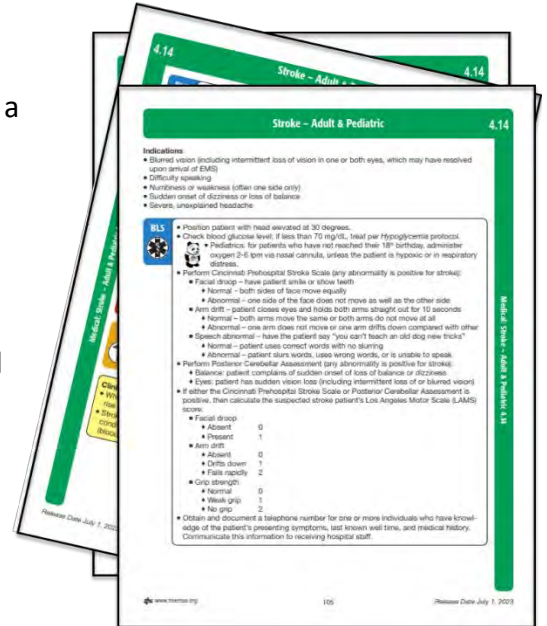
Overview

In accordance with protocol (Section 4.14 – Stroke), when encountering a patient who is experiencing stroke like symptoms, a clinician shall document the following:

- Cincinnati Prehospital Stroke Scale
- Posterior Cerebellar Assessment
- Los Angeles Motor Scale (LAMS)

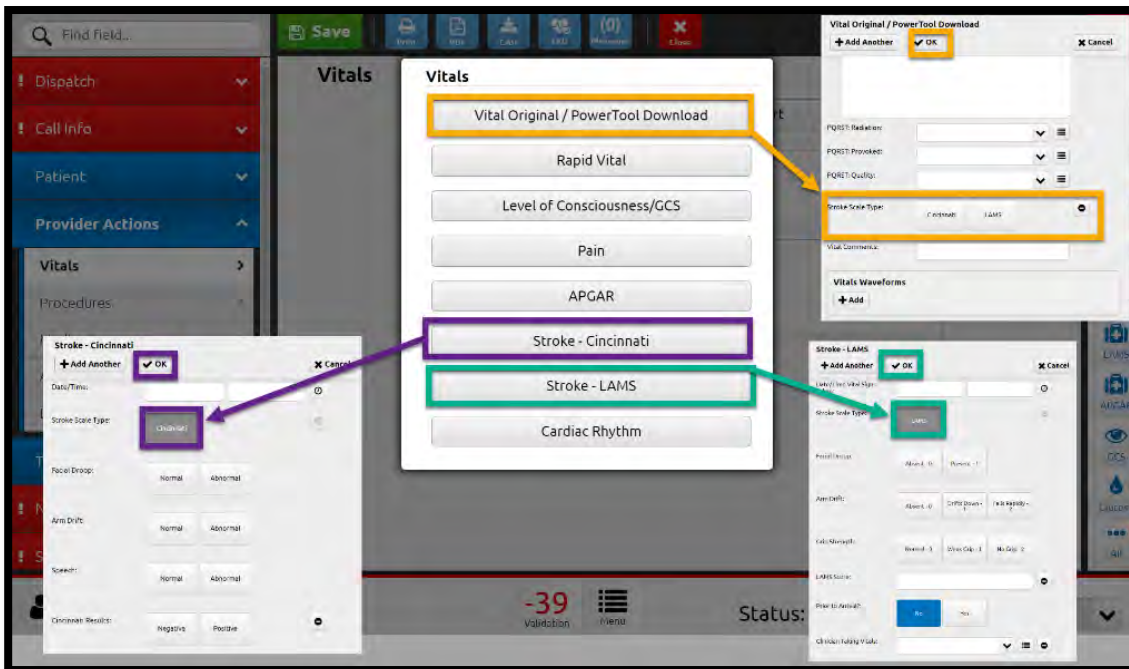
A LAMS score shall be obtained if either the Cincinnati Prehospital Stroke Scale or the Posterior Cerebellar Assessment has a positive result. As a reminder, any abnormality is considered positive for stroke.

The following is a reminder on where and how to document this information within the eMEDS application.



Cincinnati Prehospital Stroke Scale & Los Angeles Motor Scale (LAMS)

Clinicians may document these assessments within the Vitals Grid (Provider Actions > Vitals) by clicking the “Add” button.



Option 1

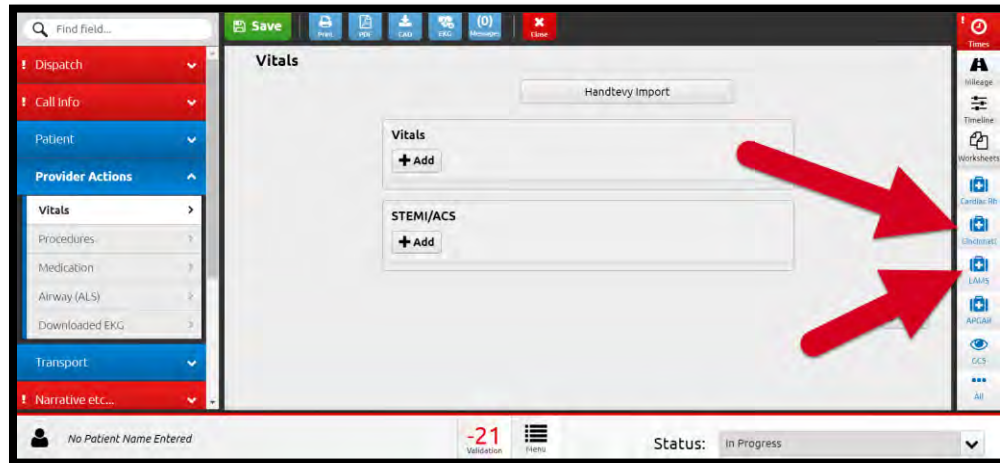
Then the clinician may select the “Vital Original / PowerTool Download” button (yellow). Scroll down to the bottom, looking for the label called, “Stroke Scale Type”. Select the appropriate stroke scale being assessed. Once a selection is made, the other available option will become hidden.

Option 2

After selecting the “Add” button, the clinician may select the appropriate stroke assessment button (purple or green) being documented. Specific questions will appear for the assessment being selected.

Option 3

Users may also choose to document these assessments with the use of the PowerTool Buttons located on the right side of the form. After completing each of these assessments, they will each appear within the vitals grid



After each assessment is documented, the user must select “OK” in the available window to complete the entry. Each assessment (Cincinnati and LAMS) must be documented in two (2) different entries.

Posterior Cerebellar Assessment

Documentation of assessment is located within the Patient Section, under the Stroke Panel. Each question is prefixed with, “PCA” to identify Posterior Cerebellar Assessment.

