

Documentation of Pilot Protocol Low Titer O+ Whole Blood (LTO+WB) with NEMSIS Guidance

ID# 2024.06.06.01 Supersedes ID# n/a Revision Date Friday, January 31, 2025 Published Date Monday, May 6, 2024

NEMSIS This document has been revised to align with NEMSIS's guidance on whole blood ePCR documentation.

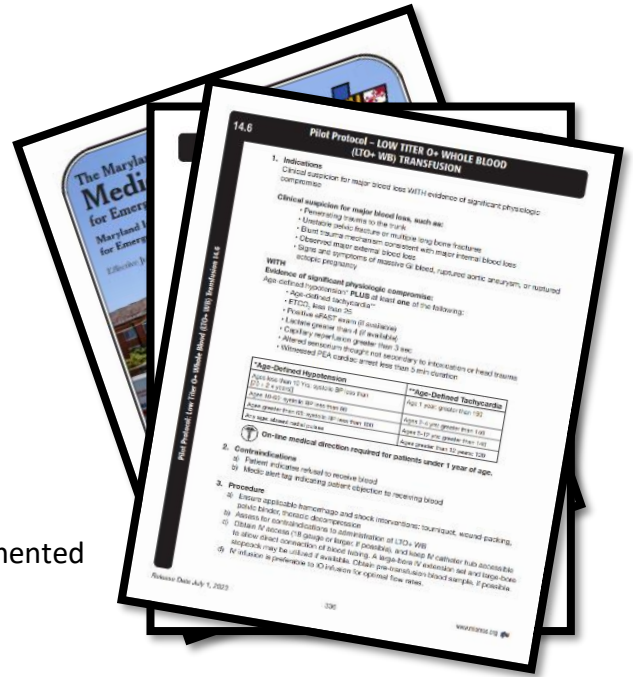
Overview

In accordance with **pilot protocol** (Section 14.6 - Pilot Protocol - Low Titer O+ Whole Blood (LTO+WB) Transfusion), when encountering a patient who has suspicion of major blood loss WITH evidence of significant physiologic compromise, **participating & approved EMSOPs ONLY**, may administer LTO+WB.

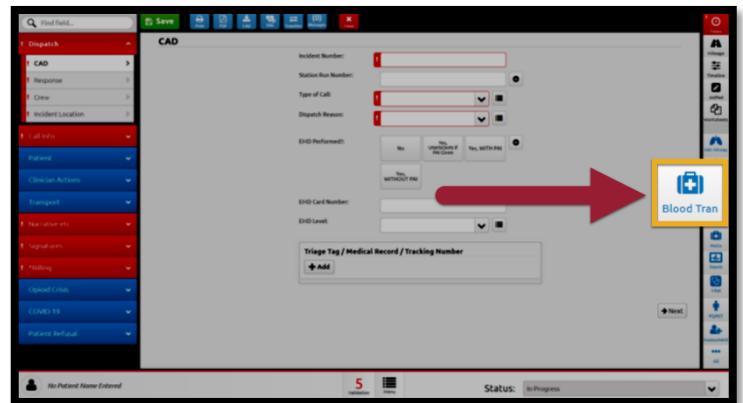
The following is a reminder on where and how to document this information within the eMEDS® application.

eMEDS Documentation

According to NEMSIS, the administration of LTO+WB shall be documented in the Procedures Performed (Clinician Actions > Procedure) **AND** Medication Given Grid (Clinician Actions > Medications).



NEW - To ensure accurate documentation of each administration of LTO+WB, please use the PowerTool labeled "Blood Tran," located on the right side of the run form. Entering this information once will automatically populate the relevant details in both the Procedures Performed and Medications Administered sections of the eMEDS report.



Jurisdictional Options

Follow your EMSOPs guidance on additional documentation needs.

Attach Pictures

EMSOPs may require clinicians to take a picture of the blood bag and attach it directly to the eMEDS report.

Document End Transfusion Time

EMSOPs may require clinicians to document the time that transfusion has ended for each administration of LTO+WB in the comments section.

NEMESIS Memo

Click image of memo to open.

